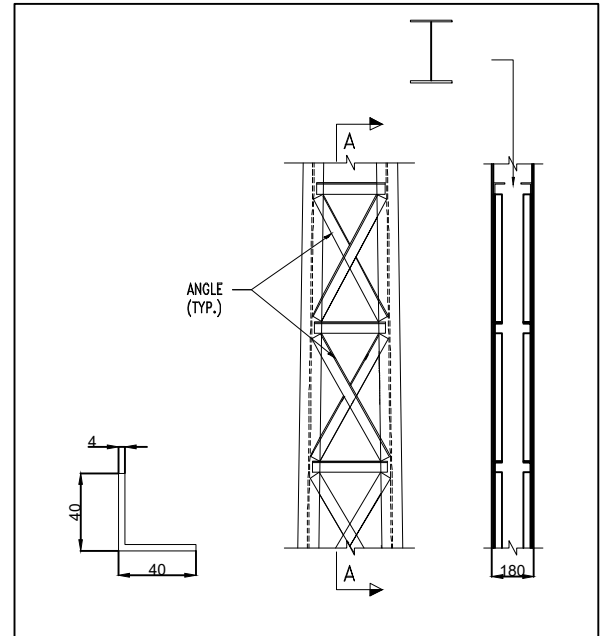
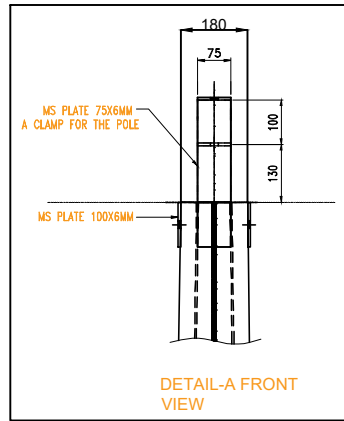
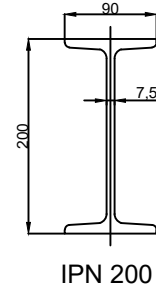
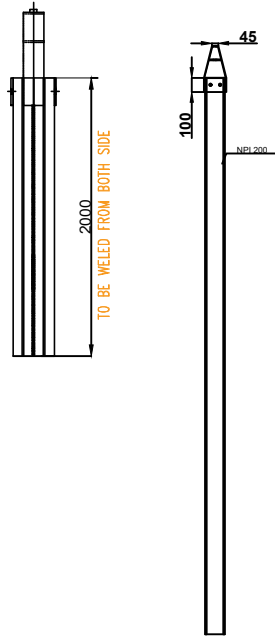
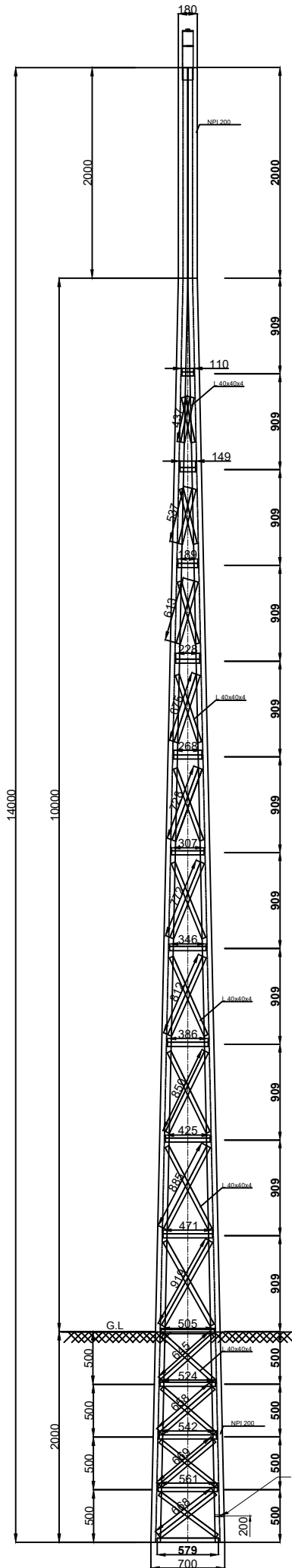


Ø18MM HOLE FOR EARTHING PURPOSE

PROJE ADI
PROJECT

14 MT LATTICE POLE (IPE200)

SİP-TEKL. NO / ORDER NO :		TASARIM RÜZGAR HIZI DESIGN WIND SPEED	GÜVENLİK KAT SAYISI FACTOR OF SAFETY
PAFTA NO / DRAWING NO :			
İŞİM/NAME	TARİH/DATE	İMZA/SING	
HAZIRLAYAN DESIGN BY	18.02.2020		 İES GALVANİZ SANAYİ VE TİCARET ANONİM ŞİRKETİ Büyüktüysüz Mahallesi E.Ayhan Tosyalı Cad. No:11 Tüysüz Beldesi 80950 TOPRAKKALE / OSMANİYE / TÜRKİYE Tel: (0328) 802 06 44 Fax: 0328 802 06 46 www.iesgalvaniz.business.site
CİZEN DRAWING BY			
KONTROL CHECKED BY			
ONAY APPROVED BY			
ÖLÇEK/SCALE	A3-	SAYI/PAGE NO	1



Ø18MM HOLE FOR EARTHING PURPOSE

PROJE ADI
PROJECT

14 MT LATTICE POLE (IPN200)

SİP-TEKL. NO / ORDER NO :		TASARIM RÜZGAR HIZI DESIGN WIND SPEED	GÜVENLİK KAT SAYISI FACTOR OF SAFETY
PAFTA NO / DRAWING NO :			
İŞİM/NAME	TARİH/DATE	İMZA/SING	
HAZIRLAYAN DESIGN BY	18.02.2020		 İES GALVANİZ SANAYİ VE TİCARET ANONİM ŞİRKETİ Büyüktüysüz Mahallesi E.Ayhan Tosyalı Cad. No:11 Tüysüz Bölgesi 80950 TOPRAKKALE / OSMANİYE / TÜRKİYE Tel: (0328) 802 06 44 Fax: 0328 802 06 46 www.iesgalvaniz.business.site
CİZEN DRAWING BY			
KONTROL CHECKED BY			
ONAY APPROVED BY			
ÖLÇEK/SCALE	A3-	SAYI/PAGE NO	1

Test Procedure of 14 m Lattice Pole

Characteristics	14 m Lattice Pole (MV)
Nominal Voltage	33.000 Volts
Highest System Voltage	36.000 Volts
System	3 Phase, Wire with Neutral Grounding Zig-Zag Transformer to Limit the Earth Fault Current to 1.000 AMP
Short Circuit Breaking Current	25 KA.R.M.S. At 33.000 Volts
Effective Length of Pole	14 m
Top Length	180 mm for IPN 200 and 200 mm for IPE 200
Bottom Length	700 mm
Column Length	14 m
Column Size	IPN 200 or IPE 200
Angle Size	Angle 40*40*4mm
Plate Thickness	7 mm for UPN 120 and 6 mm for UPN 100
Cross Arm Size	UPN 120 for 2.500mm and UPN 100 for 2.000mm
Column Material Standard	DIN 17100 S355JR
Angle Material Standard	DIN 17100 S275JR
Plate Material Standard	DIN 17100 S275JR
Cross Arm Standard	DIN 17100 S275JR
Planting Depth	2 m
Tensile Strength	52 Kgf/mm ²
Yield Strength	34,5 Kgf/mm ²
Design Bending Stress	26 Kgf/mm ²
Galvanized Coating Standard	TS-EN ISO 1461

Test Procedure		
Load (KN, Kgf)	Measuring Item	Acceptance Criteria
Ps	Specified Working Load	Any Defect Should Not be Produced
O	---	---
Pp	Ps x 1,5 Load	Any Defect Should Not be Produced
O	---	Permanent Set Shall Not Exceed (13mm from zero position)

Note : Mechanical Tensile Test is Suitable According to Procedure